

# Partizan NIP service

## Connection manual

### 1. Preparation of plugging to Partizan NIP

Connection to Partizan NIP service begins from verification of service state in a plugging-in device and receiving a device serial number.



Note! To run NIP service its support must be switched “on” in a connected device. How to check connection status and switch Partizan NIP service see below in p. 1.1 – 1.3.

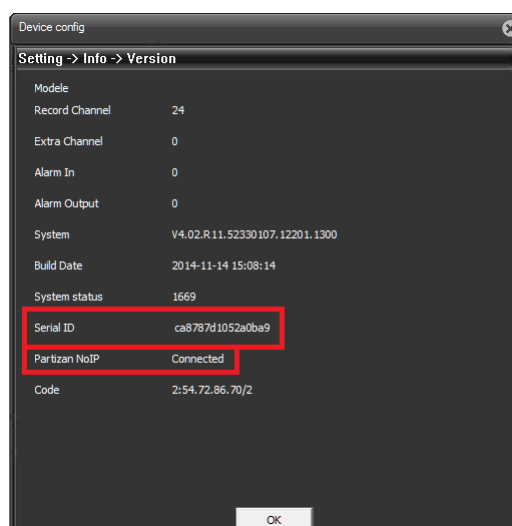


Note! Number, printed on the equipment package, is not valid for Partizan NIP registration. You have to use the one, which receiving described in p. 1.1. – 1.3.

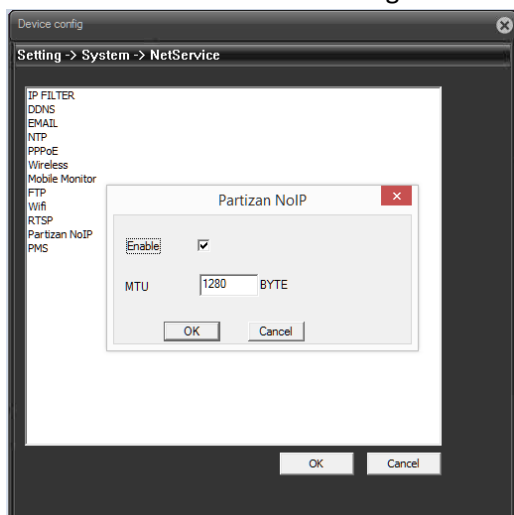
There are three ways to get a device serial number, check service state and switch “on” Partizan NIP service:

**1.1** Enter **Main menu-> Info-> Version** in a Partizan video recorder. Line “**Partizan ID**” contains a device serial number, line “**SerialNo**” contains a device service state. You can switch “on” or switch “off” the Partizan NIP service support in a video recorder at **Main menu-> System-> NetService-> Cloud**.

**1.2** Connect to the device web-interface, open «**Info**» section in «**Device settings**» menu and click «**Version**» icon:



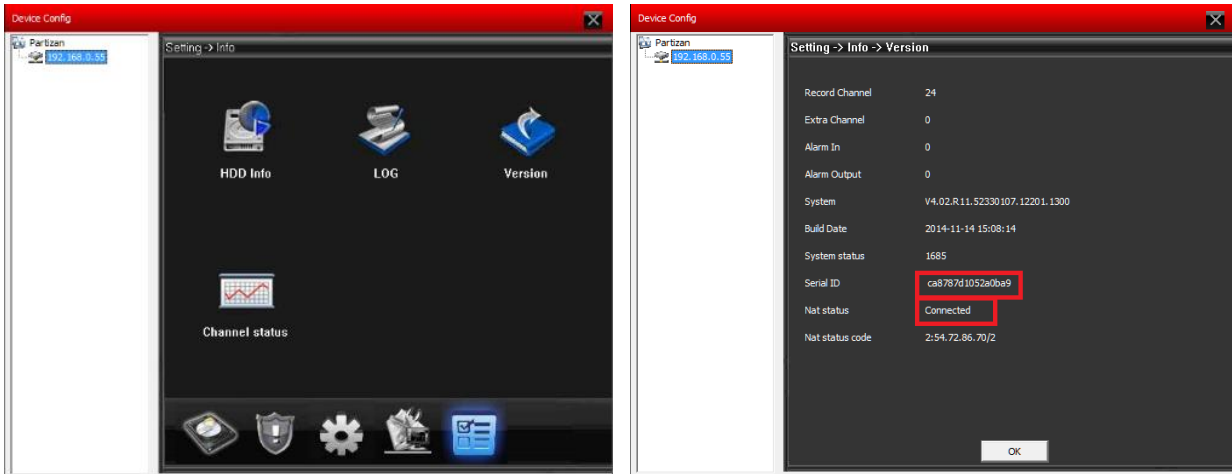
Line «**Serial ID**» contains a device serial number, and «**Partizan NoIP**» line contains information about service state in a given device.



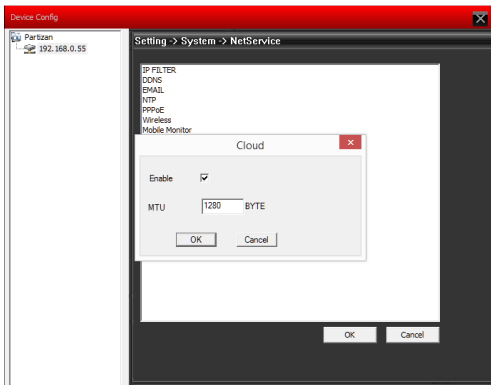
You can switch “on” or “off” Partizan NIP service from a web-interface here:

**Device config->System->NetService->Parizan NoIP.**

**1.3** Enter menu **System-> Device config** in Partizan CMS software and choose the device to connect with Partizan NIP service. Then open **Info-> Version**.



Line «**Serial ID**» contains serial number for authorization in Partizan NIP service, the line «**Nat status**» describes service status in a device.



You can activate Partizan NIP service in Partizan CMS. Enter CMS menu: **System-> Device config-> System-> NetService-> Cloud** and choose «**Enable**».

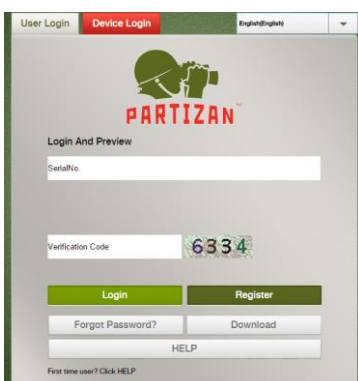
## 2. Authorization in a Partizan NIP service

After switching «on» a Partizan NIP support in a device and receiving its serial number, you have to register your equipment in a service. You can do it at the page <http://nip.partizan-cctv.com/> in two different ways: by device or by user.



Note! The correct work of Internet services and web interfaces of Partizan devices guaranteed only in Microsoft Internet Explorer browser.

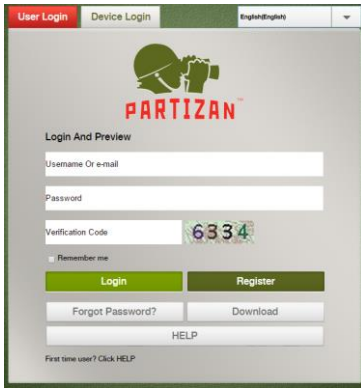
### 2.1 Authorization by device



Open tab «**Device Login**», enter serial number of a connecting camera or video recorder and a verification code for authorization by device.

After clicking «**Login**», browser will load the web interface window of a connecting device.

## 2.2 Authorization by user



### 2.2.1 User registration

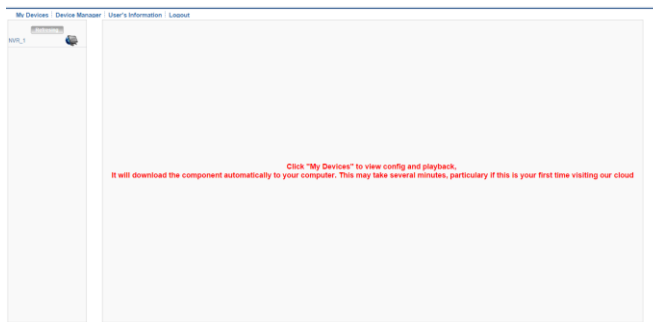
At the «**User Login**» tab at the <http://nip.partizan-cctv.com/> page, you have to click «**Register**» button,

and fill the fields of a user registration form in an opened window:

|   |   |
|---|---|
| Username  | <input type="text"/>                                  |
| Full Name   | <input type="text"/>                                  |
| Gender  | Male <input type="button" value="v"/>                 |
| Administrator's Name  | <input type="text"/>                                  |
| Address   | <input type="text"/>                                  |
| E-mail  | <input type="text"/> (Needed for retrieving password) |
| Password  | <input type="text"/>                                  |
| Confirm   | <input type="text"/>                                  |
| <input type="button" value="OK"/> <input type="button" value="Cancel"/> |   |

### 2.2.2 Login in to Partizan NIP service

Fill the form in the tab «**User Login**» at <http://nip.partizan-cctv.com/> with user name and password, used during registration in NIP. And enter the page for controlling of devices, attached to this user:



Tab «**My devices**» allows to review set of installed devices, tab «**Device manager**» allows adding and/or editing of installed device parameters.

### 2.2.3 Adding a device

Click «**Add**» in «**Device manager**» tab, the following form will appear:

|   |  |
|---|--|
| SerialNo.   | <input type="text"/>                   |
| Device Name   | <input type="text"/>                   |
| Username  | admin (Default password: "admin")      |
| Password  | <input type="text"/> (Default: "hull") |
| <input type="button" value="OK"/> <input type="button" value="Cancel"/> |  |

Enter here:

- Device serial number (the ways to it receiving are described in p. 1.1 – 1.3)
- Device name (**support only Latin characters**)
- Login&password for device access from web-interface

### 2.2.4 Login in to the device web-interface

To connect to web-interface of added IP cameras or video recorders you should follow tab «**My devices**» and click on the needed device name. If login and password were not entered while registration, a window for user authorization in a device web interface will appear.